

SOYBEAN BRAND PRODUCT INFORMATION



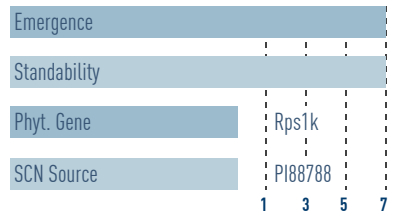
NEW

4355 BE™

4.2-4.3 Maturity Range
E3,SCN,Bolt-SB Trait



KEY CHARACTERISTICS

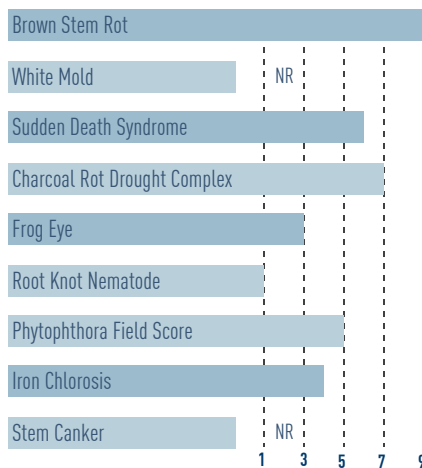


- Enlited™ Grade performance level stacked with BOLT® sulfonylurea herbicide tolerance
- Widely adapted product suitable for high yield environments and late planted double crop
- Good tolerance to sudden death syndrome
- Very good tolerance to charcoal root rot

PLANT CHARACTERISTICS

Plant Height	Plant Type	Pubescence Color	Flower Color	Pod Color	Hilum Color	% Protein	% Oil
4	6	Light Tawny	White	Brown	Black	NA	NA

DISEASE TOLERANCE



MANAGEMENT CHARACTERISTICS

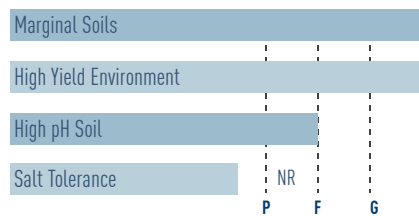


Chart Ratings

All ratings on a 1-9 scale with 9 being the highest | Plant Type: 9 = Extremely Bushy, 1 = Very Narrow | Height Ratings: 4-5 = Medium Height for Maturity, 6-7 = Medium - Tall Height for Maturity, 8-9 = Tall Height for Maturity

1 = Poor, 9 = Excellent | E = Excellent, G = Good, F = Fair, P = Poor | NR = No Rating

R2 = Glyphosate herbicide tolerance



N = Cyst Nematode resistance

X = Roundup Ready 2 Xtend® soybeans



S = Sulfonylurea herbicide tolerance



Bolt = BOLT® technology



LL = LibertyLink® gene



E = Enlist E3® soybeans



Varieties with the Glyphosate Tolerant trait contain genes that confer tolerance to glyphosate herbicides. Glyphosate herbicides will kill crops that are not tolerant to glyphosate.

DO NOT APPLY DICAMBA HERBICIDE IN-CROP TO SOYBEANS WITH Roundup Ready 2 Xtend® technology unless you use a dicamba herbicide product that is specifically labeled for that use in the location where you intend to make the application. IT IS A VIOLATION OF FEDERAL AND STATE LAW TO MAKE AN IN-CROP APPLICATION OF ANY DICAMBA HERBICIDE PRODUCT ON SOYBEANS WITH Roundup Ready 2 Xtend® technology, OR ANY OTHER PESTICIDE APPLICATION, UNLESS THE PRODUCT LABELING SPECIFICALLY AUTHORIZES THE USE. Contact the U.S. EPA and your state pesticide regulatory agency with any questions about the approval status of dicamba herbicide products for in-crop use with soybeans with Roundup Ready 2 Xtend® technology.

ALWAYS READ AND FOLLOW PESTICIDE LABEL DIRECTIONS. Soybeans with Roundup Ready 2 Xtend® technology contain genes that confer tolerance to glyphosate and dicamba. Glyphosate herbicides will kill crops that are not tolerant to glyphosate. Dicamba will kill crops that are not tolerant to dicamba.

Roundup Ready 2 Xtend® is a registered trademark of Monsanto Technology LLC used under license.

Corteva Agriscience is a member of Excellence Through Stewardship® (ETS). Corteva Agriscience products are commercialized in accordance with ETS Product Launch Stewardship Guidance and in compliance with the Corteva Agriscience policies regarding stewardship of those products. In line with these guidelines, our product launch process for responsible launches of new products includes a longstanding process to evaluate export market information, value chain consultations, and regulatory functionality. Growers and end-users must take all steps within their control to follow appropriate stewardship requirements and confirm their buyer's acceptance of the grain or other material being purchased. For more detailed information on the status of a trait or stack, please visit www.biotradestatus.com.

Excellence Through Stewardship® is a registered trademark of Excellence Through Stewardship.

Always follow grain marketing, stewardship practices and pesticide label directions. Varieties with BOLT technology provide the highest degree of plant-back flexibility for soybeans following application of SU (sulfonylurea) herbicides such as DuPont™ LeadOff® or DuPont™ Basis® Blend as a component of a burndown program.

The transgenic soybean event in Enlist E3® soybeans is jointly developed and owned by Corteva Agriscience and M.S. Technologies L.L.C.

Enlist Duo® and Enlist One® herbicides are not registered for sale or use in all states or counties. Contact your state pesticide regulatory agency to determine if a product is registered for sale or use in your area. Enlist Duo and Enlist One are the only 2,4-D products authorized for use with Enlist crops. Consult Enlist herbicide labels for weed species controlled. Always read and follow label directions.

Liberty®, LibertyLink® and the Water Droplet Design are registered trademarks of BASF.

Components of LumiGEN® seed treatments are applied at a Corteva Agriscience production facility, or by an independent sales representative of Corteva Agriscience or its affiliates. Not all sales representatives offer treatment services, and costs and other charges may vary. See your sales representative for details. Seed applied technologies exclusive to Corteva Agriscience and its affiliates.

™ ® Trademarks of Corteva Agriscience and its affiliated companies. © 2023 Corteva.

